

# the BoZone

## Entertainment & Events Calendar

Vol 28 • No 03 • Feb 1 '21



If it's Happening...  
It's in The BoZone  
& on BOZONE.COM



Entertainment & Events Calendar

Vol 28 • No 03 • Feb 1 '21

# the BoZone







# BFS titles include foreign Oscar contenders, documentary film

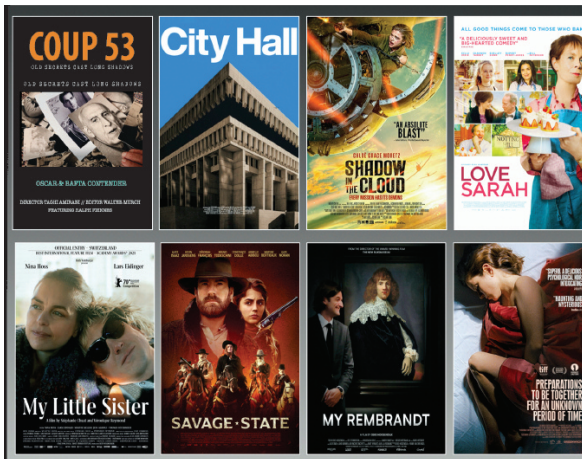
Though the vaccine(s) are making their way into the arms of our fellow Americans, the local movie theater remains temporarily closed. But fret not: Bozeman Film Society continues to virtually stream independent titles for cinephiles. Watch safely at home with new films added weekly. Streaming sales directly support BFS. Here's a look at a few February options.

An encore screening of explosive documentary ***Coup 53*** is available through Feb. 4th. The film unveils the story of Operation Ajax, the CIA/MI6 staged coup in 1953 in Iran that overthrew the democratically elected Iranian Prime Minister Mohammad Mosaddegh – with consequences that still shape the modern world. Director Taghi Amirani's 10-year tenacious investigation into this covert operation uncovers troves of never-seen-before source material, the recently recovered and uncensored transcript of the British spy who masterminded the coup (Norman Darbyshire), and oral histories of Iranian witnesses to the coup, including a play-by-play from the ousted Prime Minister's head of security. Not Rated with a runtime of 118 minutes.

Available through Feb. 11th is art documentary ***My Rembrandt***.

Rembrandt's paintings have lost none of their appeal in the 350 years since his death. Rembrandt, the grandmaster of intimacy continues rock the art world. 350 years after his death, many people, even entire nations are obsessed with his paintings. Aristocrats cherish, experts rule, art dealers investigate, collectors hunt, museums battle. *My Rembrandt* provides fascinating insight into what makes the work of this Dutch master technically so extraordinary, and why different people are so deeply affected by his oeuvre, or a specific work. Meanwhile, centuries after Rembrandt's death, his paintings are still a source of drama and gripping plot twists. Not Rated, the film runs 97 minutes.

Another documentary, ***City Hall***, is also available through Feb. 11th. This glimpse of local government at work is as patiently observant as it is engrossing. A New York Times Critic's Pick and garnering a 100% score on Rotten Tomatoes, Master documentarian Frederick



Wiseman delivers an epic look at Boston's city government, covering racial justice, housing, climate action and more. Not Rated, the film runs 4 hours, 34 minutes.

***My Little Sister***, Swiss entry for Best International Film at the 2021 Academy Awards, is available through Feb. 11th. Lisa, once a brilliant playwright, no longer writes. She lives with her family in Switzerland, but her heart remains in Berlin, beating in time with that of her twin brother Sven, the famous theatre actor. Since Sven has been suffering from an aggressive type of leukemia, the relationship between

them has become even closer. Lisa does not want to accept this blow of fate, she does everything in her power to bring Sven back on stage. For her soulmate she neglects everything else and even risks losing her husband. Her marriage goes awry, but Lisa only has eyes for her brother, who reflects her deepest longings and awakens in her the desire to be creative, to feel alive again. A New York Times Critic's Pick, the film runs 99 minutes.

Hungarian feature ***Preparations to be Together for an Unknown Period of Time***, their entry at this year's Oscars, is available until Feb. 18th. Márta, a 40-year-old neurosurgeon, falls in love. She leaves her shining American career behind and returns to Budapest to start a new life with the man. But the love of her life claims that they have never met before. The romantic drama runs 95 minutes.

Also streaming through Feb. 18th is ***The Reason I Jump***, based on the bestselling book by Naoki Higashida. The film is an immersive

cinematic exploration of neurodiversity through the experiences of non-speaking autistic people from around the world. The film blends Higashida's revelatory insights into autism with intimate portraits of five remarkable young people. It opens a window for audiences into an intense and overwhelming, but often joyful, sensory universe. The documentary runs 82 minutes.

Opening Feb. 12th is artist-musician Sia's directorial debut, ***Music***. The musical drama will stream into early March. Zu (Kate Hudson) is a free spirit estranged from her family who suddenly finds herself the sole guardian of her half sister, Music (Maddie Ziegler). The film explores the tenuous bonds that hold us together, and imagines a world where those bonds can be strengthened in times of great challenge: love, trust, and being able to be there for each other is everything. The film runs 107 minutes.

Cost and rental period vary per title. Public film screenings at the Ellen will resume when large gatherings can be safely scheduled. Follow BFS on social media for updates. Visit [www.bozemanfilmsociety.org](http://www.bozemanfilmsociety.org) for film previews and further information – and “Keep ‘Em Flickering!’” •

## Timely lectures, primeval marine life & MORE to discover



A typically bustling Hager Auditorium has been closed to lecture-goers since the onset of COVID-19, but Museum of the Rockies continues to host virtual talks for interested members and others. MOR joins forces with the Smithsonian National Museum of American History to keep the discussion going in these isolating times.

This engaging series of panels offer perspective on the current pandemic. Curators and historians use important objects from the past as a springboard to a lively discussion of how critical explorations of the past help us to better understand the present.

Next up is **“Race & Place: Yellow Fever & the Free**

## Mingle with business professionals at snowy season socials

Bozeman Area Chamber of Commerce will present **Business Before Hours** on Thursday, February 4th from 7:30–8:30am. The event will be hosted by *Residence Inn by Marriott* at their location, 6195 E Valley Center Rd., on the edge of Bozeman. Bozeman's Residence Inn is a local branch of Marriott International, Inc., a leading global lodging company with more than 7,000 properties across 131 countries and territories.

A winter **4:44 @ 4C** will unfold at *Arctic Spas Bozeman* on Thursday, February 11th from 4:44–6pm at their location, 81341 Gallatin Rd., Ste. B, just south of Four Corners. The local showroom features a selection of hot tubs and spas that are of the most energy efficient, longest lasting, and easiest to maintain in the world.

**Business After Hours** follows on Thursday, February 25th from 5:30–7pm. *Habitat for Humanity of Gallatin Valley* will host the event at its location, 230 Arden Drive, in Belgrade. Doing its part to address poverty housing issues, the local affiliate provides a helping hand-up to families who are ready for homeownership in Gallatin, Park and Madison counties.

*Note: all Chamber events adhere to Gallatin County health guidelines. Masks are required indoors and physical distancing protocols are in place.*

Bozeman Chamber gatherings and other forums provide a business networking outlet for members and others. Visit [www.bozeman-chamber.com](http://www.bozeman-chamber.com) to register for any of these events and to learn more. Event admission may be included with membership. The Chamber Center is located at 2000 Commerce Way in Bozeman. •

**African Society in Philadelphia**” on Tuesday, February 2nd at 2pm. The hour-long lecture will feature panelists Billy Smith, PhD, Montana State University; David Barnes, PhD, University of Pennsylvania; and Vanessa Northington Gamble, PhD, M.D., George Washington University.

**“Essential Workers: Prestige Versus Pay”** follows on Tuesday, February 16th at 2pm. Panelists include Peter Liebhold, National Museum of American History; Molly Kinder, Brookings Institute; and Jacob Remes, New York University, Gallatin.

Moderating each lecture is Alexandra Lord, PhD, from the National Museum of American History. Free for museum members, find the Zoom Registration Links through the MOR website.

***Savage Ancient Seas***, Museum of the Rockies' newest changing exhibition, is now open. Walk beneath what must be the fossil version of the Loch Ness Monster; a 42-foot-long *Elasmosaurus*. Dive into an ancient underwater world 70 million years ago when carnivorous fish and giant sea reptiles swam a vast, shallow sea spanning North America. See more than 50 prehistoric marine skeletons, many on display for the first time in Montana! While

dinosaurs ruled the land, these strange, spectacular creatures ruled the sea.

In partnership with Triebold Paleontology, Inc., MOR creates an ancient underwater environment where visitors will experience enormous, vicious sea monsters of the Cretaceous Period. The exhibition includes numerous prehistoric marine fossils, both cast and real specimens, mounted in extraordinary three-dimensional displays. The skeletons are mounted dramatically, many suspended from the ceiling above, immersing visitors inside a fearsome ancient ecosystem.

Finally, MOR's Taylor Planetarium continues to host showings in a limited capacity. ***Wonders of the Universe*** and ***VOYAGER: The Never-Ending Journey*** are now playing multiple times daily. Planetarium shows are included with Museum admission. Seating is limited and available on a first-come, first-served basis.

*Please note: Because admittance is limited, MOR encourages visitors to make advance reservations. Walk-ins admitted if availability allows. Face-coverings are required for entry.*

MOR is now open from 9am–4pm daily. For more information about featured exhibits, membership details and to make a reservation, visit [www.museumoftherockies.org](http://www.museumoftherockies.org). •

## Valentine's weekend gets crazy downtown

The Downtown Bozeman Association (DBA), downtown merchants and restaurants are proud to present **Winter Crazy Days 2021**. It's the biggest and best seasonal sale – set this year for Friday through Monday, February 12th–15th from 10am–6pm each day (participant hours may vary).

Whether you've been eyeing that ski jacket all season, want to plan an unforgettable Valentine's with your sweetheart or just want to score some great deals, Downtown

Bozeman will have something for everyone on this fun double-holiday weekend. Find special Valentine's dine-in and take-out menus and the best Presidents' Day deals on winter merchandise.

This event is FREE and open to the public, and will go on snow or shine. Note: Please visit [www.downtownbozeman.org](http://www.downtownbozeman.org) for details about what to expect from this year's offerings, as well as information about participating businesses. •

## Online auction, snow sculpting benefits Reach



The show must go on! Reach Inc. will host its 10th annual **Have a Heart Art Auction** on Saturday, February 6th from 6:30–7:30pm.

This free virtual program will include a silent auction of incredible art, exciting raffle prizes, and news from the Reach community. One hundred percent of sales and donations go to support the adults with developmental disabilities Reach serves. While warm weather may not be available, warm hearts

will abound.

For additional details and to preview the art, visit [reachinc.givesmart.com](http://reachinc.givesmart.com). Call (406) 587-1271 with further questions.

Also this month, Reach presents its first ever **Snow Sculpture Competition**. Everyone is welcome to participate and have fun outdoors while raising important funding for those the nonprofit serves. Sign up as an individual or team for exciting categories and prizes. Register all month long at [RunSignUp.com](http://RunSignUp.com) (search “Reach Inc. Snow Sculpture Competition”).

Established in 1974, Reach Inc. has grown to serve more than 100 clients. They support people 18 years or older who are diagnosed with an intellectual disability by providing residential, vocational, and transportation services. With its vocational Work Center, six full-service residential facilities, and a growing fleet of vehicles, Reach provides substantial community support for adults with developmental disabilities.

### Marie Gary Agency

**STAY HOME • STAY SAFE • STAY HEALTHY**



**JUST CALL OR EMAIL US, WE ARE HERE FOR YOU!**



**Auto • Home • Renters • Life**  
**MARIEGARY@ALLSTATE.COM**  
1920 W. Babcock • 586-3330

**WELCOME TO OUR NEW MEMBERS** DECEMBER 2020

CALIBER HOME LOANS

CLUB PILATES

DREAM MT PROPERTIES

GASTRO GNOME MEALS

HILLYARD INC. DBA HOUSE OF CLEAN A HILLYARD COMPANY

MONTANA SPIRITS & WINE

RAYVN US, INC. | WENDY GUSTIN

SPENDSIBLY

TACO DEL MAR

**BOZEMAN AREA CHAMBER OF COMMERCE**

THE BUSINESS VOICE OF THE COMMUNITY 1000 MEMBERS STRONG AND GROWING  
NAMED NUMBER ONE IN THE NATION

NOT A MEMBER? **JOIN TODAY**  
CALL KARRI CLARK

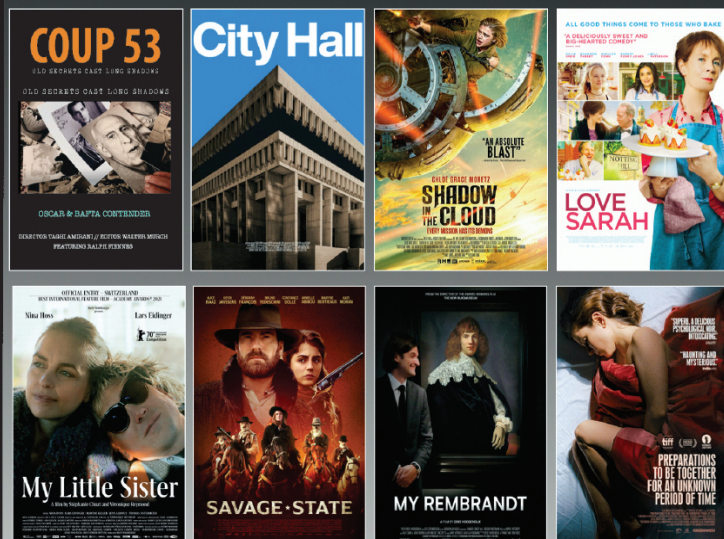
406.922.0446  
kclark@bozemanchamber.com

**bozeman area**  
**chamber of Commerce**

**BOZEMAN FILM SOCIETY**

Est. 1978

SEE EXCLUSIVE **COUP 53** BOZEMAN INTERVIEW WITH DIRECTOR TAGHI AMIRANI, OSCAR-WINNING EDITOR WALTER MURCH AND PRODUCER GERRY OHRSTROM  
MODERATED BY WRITER / DOCUMENTARY PRODUCER SEONAI CAMPBELL AND BFS EXECUTIVE DIRECTOR LISA MCGRORY



**WATCHING VIRTUAL CINEMA SUPPORTS BFS**

**Keep ‘Em Flickering!**

501c3 non-profit. Learn more at [www.bozemanfilmsociety.org](http://www.bozemanfilmsociety.org)



## THURSDAY

28

YGM's Exploring

Yellowstone Through Art

Virtual Event

Virtual Cinema w/BFS

Virtual Event

Haufbrau's Open Mic

Virtual Event

11th & Grant Encores

Virtual Event

Live From the Divide Podcasts

Virtual Event

Collecting Clothes 4 Charity

Virtual Event

The Creek Between Us – Audio

Tour

Tuckerman Park

Apron Challenge

10:00am

Bridger Bowl

Rocky Mountain Home And Garden Show

11:00am

Gallatin County Fairgrounds

Brunch Live Music – Canoe Dealers

11am

Pine Creek Lodge

Curling Club

1:00pm

Ressler Motors Ice Rink

Live Poker

3:00pm

Cat's Paw

Twisted Trivia

7:00pm

Bar IX

VALENTINE'S

» — DAY —>



FRIDAY

SATURDAY

**5** YGM's Exploring Yellowstone Through Art Virtual Event  
Virtual Cinema w/BFS Virtual Event  
Haufbrau's Open Mic Virtual Event  
11th & Grant Encores Virtual Event  
Live From the Divide Podcasts Virtual Event  
Collecting Clothes 4 Charity Virtual Event  
The Creek Between Us – Audio Tour Tuckerman Park  
We Are Still Here & This Is Our Story Emerson Center  
Virtual President's Polar Plunge Virtual Event  
Public Awareness Committee  
7:00am Bozeman Chamber of Commerce  
8th Annual Flatirons Food Film Festival  
8:00am Virtual Event  
Spread the Love: A Community Spirit-Raiser HRDC  
8:00am  
BPL's Read Sing Play Storytime  
10:00am Virtual Event  
Adult Puck Lunch 11:00am Haynes Pavilion  
Russell Chatham: Drawn by the Mystery Exhibit 11:00am Bozeman Art Museum  
Cross Country Ski Club 12:00pm Chalet Sports  
Public Skate 1:30pm Haynes Pavilion  
Open SteamLab  
3:00pm Montana Science Center  
Live Poker 3:00pm Cat's Paw  
Donnie's Inferno 5:30pm Kountry Korner Café  
Amanda Stewart  
6:00pm Rainbow Ranch Lodge – Big Sky  
Open Mic 6:00pm Pine Creek Lodge  
Helena Bighorns @ Bozeman Icedogs  
7:30pm Haynes Pavilion

**12** The Creek Between Us – Audio Tour Tuckerman Park  
We Are Still Here & This Is Our Story Emerson Center  
Virtual President's Polar Plunge Virtual Event  
Public Awareness Committee  
7:00am Bozeman Chamber of Commerce  
Singing Telegrams 8:00am Intermountain Opera  
MSU Giving Day 2021 8:00am Virtual Event  
Spread the Love: A Community Spirit-Raiser HRDC  
8:00am  
Chocolate Crawl 9:00am Downtown Three Forks  
BPL's Read Sing Play Storytime  
10:00am Virtual Event  
Pop-Up Blind Date Book Sale  
10:00am Bozeman Public Library  
Winter Crazy Days 10:00am Downtown Bozeman  
Tax Assistance 10:00am HRDC  
Adult Puck Lunch 11:00am Haynes Pavilion  
Russell Chatham: Drawn by the Mystery Exhibit 11:00am Bozeman Art Museum  
Stay-At-Home Sweet Tooth Ball  
11:00am Virtual Event  
OBOB Friday Forum 12:00pm Virtual Event  
Cross Country Ski Club 12:00pm Chalet Sports  
Public Skate 1:30pm Haynes Pavilion  
Live Poker 3:00pm Cat's Paw  
Horse & Carriage Rides  
3:30pm Downtown Three Forks  
Cannery Stroll 5:00pm Cannery District  
Through the Fourth Wall  
5pm, 7pm & 9pm Warren Miller PAC  
Donnie's Inferno 5:30pm Kountry Korner Café  
Open Mic 6:00pm Pine Creek Lodge  
Winter Classic Tournament  
7:00pm Haynes Pavilion

**19** YGM's Exploring Yellowstone Through Art Virtual Event  
Virtual Cinema w/BFS Virtual Event  
Haufbrau's Open Mic Virtual Event  
11th & Grant Encores Virtual Event  
Live From the Divide Podcasts Virtual Event  
Collecting Clothes 4 Charity Virtual Event  
The Creek Between Us – Audio Tour Tuckerman Park  
We Are Still Here & This Is Our Story Emerson Center  
Public Awareness Committee  
7:00am Bozeman Chamber of Commerce  
FUNSKI Community Nordic Ski Series  
8:00am Virtual Event  
BPL's Read Sing Play Storytime  
10:00am Virtual Event  
Tax Assistance 10:00am HRDC  
Adult Puck Lunch 11:00am Haynes Pavilion  
Russell Chatham: Drawn by the Mystery Exhibit 11:00am Bozeman Art Museum  
Cross Country Ski Club 12:00pm Chalet Sports  
Public Skate 1:30pm Haynes Pavilion  
Live Poker 3:00pm Cat's Paw  
Through the Fourth Wall  
5, 7 & 9pm Warren Miller Performing Arts Center  
Donnie's Inferno 5:30pm Kountry Korner Café  
Sunrise Karaoke  
6:00pm Lane Bar – White Sulphur Springs  
Open Mic 6:00pm Pine Creek Lodge

**26** Public Awareness Committee  
7am Bozeman Chamber  
Tax Assistance 10:00am HRDC  
Russell Chatham  
11:00am Bozeman Art Museum  
Cross Country Ski Club 12:00pm Chalet Sports  
Public Skate 1:30pm Haynes Pavilion  
Live Poker 3:00pm Cat's Paw  
Auction for the Arts Fundraiser  
5:00pm Lone Peak Cinema  
Donnie's Inferno 5:30pm Kountry Korner Café  
Metamorphosis  
5:30 & 8pm Warren Miller PAC  
Science Night In 6:00pm Montana Science Center

**PIZZA BY THE SLICE**  
**COSMIC PIZZA**  
FREE DELIVERY  
1912 W. Main • 582-9292

**6** YGM's Exploring Yellowstone Through Art Virtual Event  
Virtual Cinema w/BFS Virtual Event  
Haufbrau's Open Mic Virtual Event  
11th & Grant Encores Virtual Event  
Live From the Divide Podcasts Virtual Event  
Collecting Clothes 4 Charity Virtual Event  
The Creek Between Us – Audio Tour Tuckerman Park  
We Are Still Here & This Is Our Story Emerson Center  
Virtual President's Polar Plunge Virtual Event  
Singing Telegrams 8:00am Intermountain Opera  
Spread the Love: A Community Spirit-Raiser HRDC  
8:00am  
Bozeman Winter Farmers' Market  
9:00am Gallatin County Fairgrounds  
Super Sitters Class 10:00am Gallatin Valley YMCA  
King & Queen of the Race 10:00am Bridger Bowl  
Russell Chatham: Drawn by the Mystery Exhibit  
11:00am Bozeman Art Museum  
Brunch Live Music – Cole Decker  
11:00am Pine Creek Lodge  
Weber State @ MSU Bobcat Women's Bball  
12:00pm Brick Breeden Fieldhouse  
Live Poker 3:00pm Cat's Paw  
Live Music 5:00pm Sage Lodge  
Joe Knapp 5:30pm Kountry Korner Café  
Sunrise Karaoke 6:00pm Friendly Tavern  
Uncorked & Unplugged 6:00pm Blend Wine Bar  
Reach Inc. Have a Heart Art Auction 6:30pm Virtual Event  
Missoula Junior Bruins @ Bozeman Icedogs  
7:30pm Haynes Pavilion  
Livingston Model Railroad Club  
7:30pm Livingston Depot Center

**13** Collecting Clothes 4 Charity Virtual Event  
The Creek Between Us – Audio Tour Tuckerman Park  
We Are Still Here & This Is Our Story Emerson Center  
Virtual President's Polar Plunge Virtual Event  
Singing Telegrams 8:00am Intermountain Opera  
Spread the Love: A Community Spirit-Raiser HRDC  
8:00am  
Mountaineers Winter Rally  
9:00am Gallatin County Fairgrounds  
Chocolate Crawl Three Forks 9:00am Downtown Three Forks  
CPR Certification Course 9:00am Gallatin Valley YMCA  
Winter Crazy Days 10:00am Downtown Bozeman  
Pop-Up Blind Date Book Sale  
10:00am Bozeman Public Library  
Making Fire Cider 10:00am Paradise Permaculture  
Russell Chatham: Drawn by the Mystery Exhibit  
11:00am Bozeman Art Museum  
Stay-At-Home Sweet Tooth Ball 11:00am Virtual Event  
Brunch Live Music – Joe Knapp 11:00am Pine Creek Lodge  
Eastern WA @ MSU Bobcat Men's Bball  
12:00pm Brick Breeden Fieldhouse  
Live Poker 3:00pm Cat's Paw  
Horse & Carriage Rides 3:30pm Downtown Three Forks  
Through the Fourth Wall – & 7pm, 9pm  
5pm, 7pm & 9pm Warren Miller Performing Arts Center  
Luke Williams 5:00pm Sacajawea Bar – Three Forks  
Live Music 5:00pm Sage Lodge  
Joe Knapp 5:30pm Kountry Korner Café  
Sunrise Karaoke 6:00pm Friendly Tavern  
Uncorked & Unplugged 6:00pm Blend Wine Bar  
Winter Classic Tournament 7:00pm Haynes Pavilion  
Livingston Model Railroad Club  
7:30pm Livingston Depot Center

**20** Collecting Clothes 4 Charity Virtual Event  
The Creek Between Us – Audio Tour Tuckerman Park  
We Are Still Here & This Is Our Story Emerson Center  
HealthCare Connections 8:00am Harrison (Main Street)  
FUNSKI Community Nordic Ski Series 8:00am Virtual Event  
Bridger Gully Freeride 9:00am Bridger Bowl  
Bozeman Winter Farmers' Market  
9:00am Gallatin County Fairgrounds  
Make Your Own Lip Balm and Salve  
10:00am Paradise Permaculture  
Russell Chatham: Drawn by the Mystery Exhibit  
11:00am Bozeman Art Museum  
Brunch Live Music – Maggie Hickman  
11:00am Pine Creek Lodge  
HealthCare Connections  
12:00pm Three Forks Community Library  
Idaho State at MSU Bobcat Women's Bball  
12:00pm Brick Breeden Fieldhouse  
Live Poker 3:00pm Cat's Paw  
Through the Fourth Wall  
5, 7 & 9pm Warren Miller Performing Arts Center  
Live Music 5:00pm Sage Lodge  
Joe Knapp 5:30pm Kountry Korner Café  
Sunrise Karaoke 6:00pm Friendly Tavern  
Uncorked & Unplugged 6:00pm Blend Wine Bar  
Livingston Model Railroad Club  
7:30pm Livingston Depot Center

**27** Collecting Clothes 4 Charity Virtual Event  
The Creek Between Us – Audio Tour Tuckerman Park  
Terrain Park Jam 9:00am Bridger Bowl  
Rocky Mountain Home And Garden Show  
11:00am Gallatin County Fairgrounds  
Russell Chatham: Drawn by the Mystery Exhibit  
11:00am Bozeman Art Museum  
Annual Seed Saving Event 11:00am Virtual Event  
Brunch Live Music – Amanda Stewart  
11:00am Pine Creek Lodge  
Idaho at MSU Bobcat Women's Bball  
12:00pm Brick Breeden Fieldhouse  
Live Poker 3:00pm Cat's Paw  
SnowBall Gala 5:00pm Rialto  
Live Music 5:00pm Sage Lodge  
Metamorphosis  
5:30 & 8pm Warren Miller Performing Arts Center  
Joe Knapp 5:30pm Kountry Korner Café  
Sunrise Karaoke 6:00pm Friendly Tavern  
Uncorked & Unplugged 6:00pm Blend Wine Bar  
Auction for the Arts Fundraiser  
7:00pm Lone Peak Cinema  
Sheridan Hawks @ Bozeman Icedogs  
7:30pm Haynes Pavilion  
Livingston Model Railroad Club  
7:30pm Livingston Depot Center

**Mellow Mood**  
We have everything you need to enjoy the smoker's lifestyle!  
**7 Tai Lane • Bozeman**

**VOTED BOZEMAN'S BEST SUSHI**  
**DAVE'S SUSHI**  
OFF MAIN - BOZEMAN, MT  
**Take-Out & Dine-In - 556-1351**

**Wellness Solutions**  
**Montana Medical Marijuana Card Evaluations**  
NOW OFFERING  
TELEMEDICINE STATEWIDE!  
SPECIALIZING IN NEW PATIENT  
ACCESS & CONTINUITY OF CARE  
CONVENIENT, SAFE, DISCREET  
CALL (406) 581-1280 OR VISIT [WellnessSolutionsMT.com](http://WellnessSolutionsMT.com)  
FOR 24/7 SCHEDULING

**ZEPP**  
**MORNINGS**  
**THE EAGLE**  
104.7 & 105.7

**Streamline**  
Catch the Current  
HAI

**Adopt a Friend for Life!**  
**Stafford Animal Shelter**  
Livingston, Montana  
View adoptable pets online or  
visit our shelter Wed-Sun Noon-5:00  
[staffordanimalshelter.org](http://staffordanimalshelter.org)

Get YOUR ad on  
The BoZone Calendar

Call 586-6730 or email  
[info@BoZone.com](mailto:info@BoZone.com)

Please check venue to confirm  
event

IF IT'S HAPPENING... IT'S IN THE BOZONE • SINCE 1993 • January 31 - February 28, 2021



## Wilderness Alliance drafts legislation to protect Northern Yellowstone Ecosystem

The Gallatin Yellowstone Wilderness Alliance recently announced their proposal for new Wilderness designations on the Custer Gallatin National Forest in Southern Montana.

GYWA plans to introduce a Wilderness Bill to the US Congress, titled the **Gallatin-Yellowstone Wilderness Act**. The Bill would designate about 800,000 acres of new Wilderness in the northern Greater Yellowstone Ecosystem and nearby federal lands. GYWA has identified Montana's Custer Gallatin as the epicenter of some of the most spectacular unprotected wild lands in the nation.

Phil Knight of GYWA offered, "It's a new year, after a very tough 2020, and we all need positive ideas. How about a fresh start by protecting more Wilderness? What could be better for the people, the wildlife and the land?"

George Wuerthner, author, ecologist and GYWA board member, said, "The Greater Yellowstone Ecosystem

is part of the global heritage, and we have a responsibility to do everything we can to preserve it."

"We are talking about protecting some of the top one or two per cent of wild country in the lower 48," added Knight. These wild lands are some of the best wildlife habitat in the country, providing a home for Grizzly Bear, Lynx, Wolf, Elk, Moose, Mountain Goat, Wolverine and Bighorn Sheep, and are the source of waters that support genetically pure Yellowstone and West Slope Cutthroat Trout.

Anne Millbrooke, GYWA board member, explained "Big open spaces are not actually open and certainly not wasted. Nature fills that space and uses it. As byproducts, nature protects our clean air and clean water. It even stores carbon."

The Custer Gallatin caps Yellowstone National Park like a crown of wild mountains. From Cowboy Heaven to the Tongue River Breaks, the Crazy Mountains to the Line Creek Plateau, the Gallatin



Crest to Lionhead, the Beartooth Front to the Pryor Mountains, there is no other national forest like it. GYWA believes that what the Custer Gallatin does best is provide for high-quality wild lands. It is not the nation's wood box, nor should it be the nation's outdoor gymnasium.

Wild lands protection is critical to the quality of life of the region's communities, and essential to the outdoor economy that draws visitors, as well as

contributing to the wellbeing of residents, providing clean water, important fish habitat, critical wildlife habitat, scenic beauty, and solace for people in troubled times.

According to Conservation Biology principles, larger protected areas are better than smaller patches of habitat. So it is important to conserve larger unprotected wild lands, especially if they are contiguous to existing protected areas such as

Yellowstone Park.

In addition, some wild lands are critical corridors for the movement of wildlife between other protected landscapes. For example, the Bridger Mountain Range can serve as a corridor connecting the Greater Yellowstone Ecosystem to other wild lands further north.

You can view GYWA's draft wilderness legislation at [www.gallatinyellowstonewilderness.org](http://www.gallatinyellowstonewilderness.org).

## MT Conservation Voters launches Montana Pushback

*MontanaPushback.org to safeguard public lands, clean air and water*

Montana Conservation Voters Education Fund recently launched **Montana Pushback**, a new campaign to keep all Montanans informed and equipped to protect the Treasure State's clean air, water and public lands.

Executive Director Whitney Tawney released the following statement:

"While elected leaders across the political spectrum pledged to support and defend Montana's outdoors in last year's election, it's up to us as Montanans to make sure they live up to their promises. Montana's brightest days are ahead, but it will take

committed Montanans from across the state standing up and pushing back against ill-conceived ideas that will deprive future generations the clean air, clean water and public that so many of us often take for granted."

On Nov. 3, Montana voters elected an almost entirely new state government.

Almost every candidate who ran for office said they would protect Montana's outdoor heritage and expand access to our public lands. Now the MCV Education Fund is taking on the task to make sure they live up to their promises.

The MCV Education Fund is facing another unprecedented threat: the COVID-19 pandemic. The pan-

dem is forcing all Montanans to work in a completely different way, but also means changes to the Montana Legislature. It will be easier for politicians to pass unpopular legislation without public awareness or participation.

The MCV Education Fund launched MontanaPushback.org to keep all Montanans informed and equipped to protect Montana's clean air, water and public lands. As the new legislature begins and Montana's new governor takes over, the MCV Education Fund is staying vigilant to the task ahead.

The campaign's website is now live at [www.MontanaPushback.org](http://www.MontanaPushback.org).

## Food Bank Network releases *Voices of Montana: COVID-19 Edition*

Montana Food Bank Network (MFBN) is pleased to announce the release of ***Voices of Montana: COVID-19 Edition*** report.

The report illustrates the impact of COVID-19 and the resulting economic downturn on hunger in Montana through data and in-depth stories. Data were collected through surveys of individuals seeking food assistance at MFBN's partner agencies and programs across the state. The organization received 917 responses from 30 counties.

Results show that 70 percent of adults reported a loss of income due to reduced hours, furlough or job loss. Additionally, more than 40 percent reported receiving food from a food pantry for the first time after the onset of the pandemic, indicating how many people have needed

help for the first time as a result of COVID.

The report also details MFBN's response to the pandemic through both food distribution and advocacy, and shares examples of how community partners have adapted and responded to local needs. Finally, the report highlights the stories and experiences of real Montanans impacted by COVID.

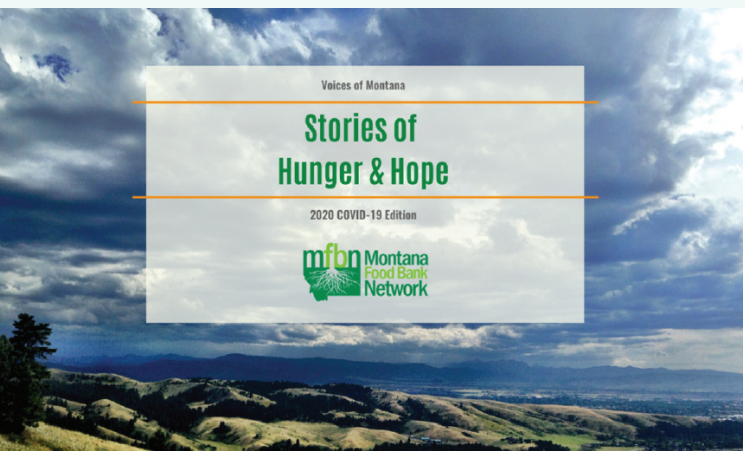
The report will be used to educate policymakers and community partners of the current status of hunger in Montana and the impacts of COVID-19. It will also help to inform MFBN's policy work to support programs and policies that reduce food insecurity in Montana.

The full report can be viewed online at [www.mfbn.org/research](http://www.mfbn.org/research).

# Reservations Required for ALL Services this Season

**BRIDGER BOWL**  
Ski The Cold Smoke Bozeman, MT

**Make Reservations Online**  
[bridgerbowl.com](http://bridgerbowl.com)



The BoZone Entertainment and Events Calendar is Bozeman's Best at informing you of community events including art, music, theatre, dance, literature, and culture. The BoZone is the most informative of any Bozeman magazine out there. Every attempt is made to provide accurate and reliable information. For everything happening in Bozeman, we are the Bozeman magazine where you will find it. The BoZone Entertainment and Events Calendar or staff can not be held responsible for misprints or wrong information. Phone numbers are provided for your convenience to check showtimes. If you can provide information on future community events, please send it by the 3rd & 18th of the month. If you would like to be contacted regarding advertising, please send correspondence to:

115 W. Kagy, #B, Bozeman, MT 59715  
• Phone: 406-586-6730  
Fax: 406-582-7676 • Cell 406-539-6730  
Email: [info@bozone.com](mailto:info@bozone.com)  
On the Web - [WWW.BOZONE.COM](http://WWW.BOZONE.COM)  
Copyright© 1993-2021  
Bozeman Entertainment LLC., Bozeman, MT

**Publisher, Sales Mgr. & Editorial Director**  
**Glenn Chamberlin**  
**Managing Editor**  
**John Kirk Vincent**  
**Calendar/Social Media**  
**Reilly McNaught**

Contributing Writers  
**Reagan Colyer,**  
*MSU News Service*



# MSU epidemiologist featured in *Rolling Stone* article

by Reagan Colyer, MSU News Service

Montana State University associate professor and epidemiologist Raina Plowright was recently featured in a *Rolling Stone* article examining how pandemics like COVID-19 come about.

The article, “**How Climate Change is Ushering in a New Pandemic Era**,” was published Dec. 7 and features Plowright alongside Anthony Fauci, director of the National Institute of Allergy and Infectious Diseases and one of the nation’s leading experts on COVID-19. The piece examines how viruses such as the coronavirus move from animal populations into humans and the role a changing climate may play in the frequency and severity of potential future pandemics.

Many animal species, writes the story’s author Jeff Goodell, are experiencing habitat changes due to climate change. As a result, some animal populations migrate closer to humans than previously recorded, bringing with them unique pathogens. Animals may have evolved to coexist with those unfamiliar

pathogens, but when they infect humans, the results can vary widely.

Plowright, an associate professor in the College of Agriculture’s Department of Microbiology and Immunology, is a trained veterinarian who has also studied ecology. At MSU, she studies the viruses carried by bats, which are thought to be one of the sources of SARS-CoV-2, the virus that causes COVID-19.

“Climate change is affecting bats in profound ways,” said Plowright in the article. “Many bat species are insectivorous, and so climate change has a big impact on their food sources, as well as on their physiological stress and where they live and how they interact with humans.”

In addition to the COVID-19 virus, Plowright has studied the Hendra and Nipah viruses, both pathogens that were traced back to bats after causing outbreaks in 1994 and 1998, respectively. She calls the emergence of so many pathogens from one host animal “unprecedented” and focuses her research at MSU on how bats interact with the viruses

they carry – and how to prevent spillover events where an animal transmits a virus to a human host.

Unlike the virus that causes COVID-19, said Plowright, neither Nipah nor Hendra virus became widespread because they cannot be transmitted asymptotically. That made it much easier to identify and isolate infected individuals. However, she calls each potential spillover event a “roll of the dice,” in that it is impossible to know what the emerging virus may look like in a human population.

With the possibility of spillover increasing as animals come into more contact with humans, Plowright said the study of pandemics and the study of climate change are linked, each influencing the other.

“You can imagine a network of food caches across a landscape [for bats],” said Plowright. “Some bats are moving from one patch to the next. ... You start taking away those patches, get to a point where there’s no food, so they end up in people’s yards, or at horse stables, or anywhere food is plentiful.”

The full *Rolling Stone* article can be read at



[www.rollingstone.com](https://www.rollingstone.com) (search “Climate Change Pandemic Era”). •

## Plunge from a distance in support of Special Olympics MT

Support Montana’s Special Olympics athletes with a harsh dip into icy winter waters! The **2021 Virtual President’s Polar Plunge** will conclude with a video presentation on Saturday, February 13th.

This year, participants are asked to come up with a fun and safe way to take the Plunge. Take photos or record a no more than 60-second video of yourself or your team freezin’ for a reason! Create a fundraising page to share on social media along with your Plunge content using the hashtags #Plunge406 and #BelowZeroHero. Awards for the most creative plunge and top fundraisers.

Photo and video submissions must be received by Feb. 7th. Find a How to Virtual Plunge Flyer through the event website. Thousands of plungers have raised hundreds

of thousands of dollars since 2002 with this annual event. Let’s take this haul to the next level!

Questions? Visit [www.somt.org/plunge](https://www.somt.org/plunge) for registration, to create a fundraising page, as well as further event information.

Special Olympics Montana is a nonprofit organization determined to provide year-round sports training and athletic competition in a variety of Olympic-type sports for children and adults with intellectual disabilities, giving them continuing opportunities to develop physical fitness, demonstrate courage, experience joy, and participate in a sharing of gifts, skills, and friendship with their families, other Special Olympics athletes, and the community.

## Schedule spring wellness checks with mobile health events

Bozeman Health continues to offer **HealthCare Connections – Mobile Health Screenings** at locations in and around the Gallatin Valley.

Due to the ongoing COVID-19 pandemic, *appointments are now required* in advance. Masks must be worn while receiving services. Here’s a look at when and where upcoming events will be held.

The next event is set for Wednesday, Feb. 10th at Big Sky Town Center’s *Fire Pit Park*, with appointment availability between the hours of noon and 4pm. On Saturday, Feb. 20th, the mobile health bus heads to Main Street in *Downtown Harrison* from 8am to 10am, before moving to *Three Forks Community Library* from noon to 3pm. Looking to a new month, *Bozeman Public Library* will again play host on Wednesday, March 3rd from 10am to 2pm.

Regular preventive health screenings and immunizations are essential to good health. Sometimes we postpone these medical necessities because we can’t afford it, however, none of us can afford to get sick. That’s why Bozeman Health is offering **FREE** health screenings and select immunizations for those who need it including the uninsured and underinsured. Protect your health. Stay healthy. Get screened and know your risks.

Screenings include breast and colon cancer, high blood pressure, heart disease, diabetes, bone density, obesity, and HIV and HepC. Additionally, select vaccinations are offered including Tdap (tetanus, diphtheria, and pertussis), pneumonia, and flu.

Please visit [www.bozemanhealth.org/healthcare-connections](https://www.bozemanhealth.org/healthcare-connections) for further information and to schedule an appointment.

## ‘Ski the Cold Smoke’ with slope-side contests

Bridger Bowl is now open to skiers and snowboarders of Southwest Montana – with *daily reservations required this year*. Take in some alpine competition to keep ski season interesting. Here’s a look at what’s coming up.

Though the traditional Ridge hike-a-thon won’t be happening this year, take part in the **King & Queen of the Race**. The modified benefit event has been extended to two days: Saturday and Sunday, February 6th and 7th. Race with friends of all ages on alpine skis, tele skis or snowboards. Take one run on the blue course and one on the red. Best of two timed runs.

Funds raised during this weekend event help support avalanche education in Southwest Montana – 100% of proceeds go to the Friends of the Gallatin National Forest Avalanche Center. \$175,001 has been raised since 2003!

The **Bridger Gully Freeride** follows on Saturday, Feb. 20th. This judged freeriding event off Bridger’s Ridge grades participant runs based on various criteria. It is designed

for skiers and snowboarders of all disciplines.

The always exciting **Terrain Park Jam** is set for Saturday, Feb. 27th. This slopestyle competition features a variety of rails, rollers, boxes, banks and barrels.

Skiers and snowboarders will take two judged runs and a jam on a feature chosen by each age group.

The rescheduled **Apron Challenge** closes out the month on Saturday, Feb. 28th. This timed hiked up the Apron features a wild descent down an off-piste GS course. Open to citizen alpine, telemark and snowboard

racers of all ages.

*Note: Find additional registration information through the Bridger Bowl website. Event occurrences subject to change. Follow Bridger on social media for up-to-date details and announcements.*

The ski area is located on the east slope of the Bridger Mountain Range. For daily pass information and reservations, as well as upcoming event details, visit [www.bridgerbowl.com](https://www.bridgerbowl.com). •



**VOTED BOZEMAN'S BEST FURNITURE STORE 7 YEARS RUNNING**

**VOTED BOZEMAN'S BEST USED FURNITURE STORE 8 YEARS RUNNING**

**U•F•S**

**B•Z•N**

203 N 20TH • BOZEMAN • MT • 406.586.1555

[WWW.UFSBOZEMAN.COM](https://www.ufsbozeman.com)

## Informative lunchtime seminars return with remote format

The Montana State University Women’s Center will present virtual Sack Lunch Seminar “**Mentorship & Microfluidics: High Quality Medical Care for All**” on Wednesday, February 10th. Dr. Stephanie McCalla, Associate Professor in Chemical and Biological Engineering, and Chemical Engineering senior Mikayla Wood will present from noon–1pm. This online program is part of the MentHERship: Women in STEM series.

Dr. McCalla and Wood are working to engineer faster and cheaper alternatives to current medical diagnostics with the goal of improving access to medicine. They use tools like microfluidics, which are miniature devices that can manipulate small volumes of fluids, to detect and quantify indicators of disease. They will also discuss the important role that mentorship plays in the lab for women in STEM.

“**The Lives & Landscape of Working-Class Women in the West**”, another virtual Sack Lunch Seminar, is set for Wednesday, March 3rd. Crystal Alegria, Director of the Extreme History Project, will present from noon–1pm.

Alegria will examine working women’s lives in the 19th Century West. She will do so through the historic lens of three women; a midwife, a businesswomen and a prostitute. By looking at the challenges and opportunities of the landscape these three women navigated and negotiated during their lifetimes, we can better understand the structure of working

women’s lives in the 19th Century West.

*Note: These seminars will be held virtually and are open to the public. Contact [danforth@montana.edu](mailto:danforth@montana.edu) for access info.*

The MSU Women’s Center is a department in the division of Student Success and was created to promote greater responsiveness to the needs of university women. Hours of operation are Monday through Friday from 9am–4pm during the academic year, when classes are in session. Lectures are **FREE** and open to the public. For more information about these and other events, visit [www.montana.edu/women](https://www.montana.edu/women). •



**Streamline**

A PROGRAM OF OHRC

*Catch the Current!*

**QUICK, EASY, SUSTAINABLE, and FARE-FREE**

**Come ride the bus this year to all of Bozeman's unique destinations, including local trails, downtown public library, tasty restaurants & bars, historic shops, and more!**

Visit our website today!

[StreamlineBus.com](https://StreamlineBus.com)



# The Rolling Zone

February 01, 2021

The BoZone • Volume 28, Number 03

## MUSIC IN AND AROUND THE BOZONE

### Local band takes live streaming up a notch



Dave Walker joined Sam Platts and The Great Plainsmen January 17 for a rousing round of Johnny Cash's 'Folsom Prison Blues'

### Pine Creek pairs weekend eats with intimate acoustics

Pine Creek's popular Brunch Live Music Series is held on Saturday and Sundays in February. The tunes begin at 11am and run until 1pm.

**Cole Decker** opens the month on Feb. 6th. The Mississippi-born singer/songwriter pulls from his musical roots of old school country. He draws influence from the likes of Waylon Jennings and newer artists including Chris Stapleton, Brent Cobb and Jason Isbell.

**Chandler Huntley** performs on Feb. 7th. The South Carolina native draws influence from Johnny Cash, Merle Haggard, Guy Clark, John Prine, Robert Earl Keen and other country greats, from the current and past. His upbeat, finger-picking guitar style and soulful voice are something to behold.

Local musician **Joe Knapp** takes the stage on Feb. 13th. Frontman of multi-piece SlomoJoe, he's a favorite around town for his mastery of a variety of styles including Americana, rock n' roll, old time and country music.

**Daniel Kosel** serenades for Valentine's Day, Feb. 14th. His poetry, soulful vocals and guitar work make a delightful listening experience best described as "Crues Music," a self-styled blend of country, rock and blues.

**Maggie Hickman** is back in

Paradise Valley on Feb. 20th. The Bozeman singer/songwriter performs a blend of originals and notable covers, often showing off her stringwork on guitar.

**Shelly Besler Kersbergen** follows on Feb. 21st. The Livingston-based singer/songwriter counts Patty Griffith, Wilco and Katie Herzig among her influences.

One half of Americana duo Sweet Sage, **Amanda Stewart** brings an intimate show to the Lodge on Feb. 27th. She performs acoustic, alternative and country covers – not to mention plenty of her own original music.

**The Canoe Dealers** perform Feb. 28th. This duo featuring Lena "Laney Lou" Schiffer and the Last Revel's Ryan Acker blends their complimentary voices and musical inspirations to provide listeners with songs both familiar and new.

These shows are FREE of admission, but space is limited. Current health guidelines will be observed in the dining area. Performance dates subject to change.

Please visit [www.pinecreek-lodgemontana.com](http://www.pinecreek-lodgemontana.com) to learn more about these and other upcoming events. Pine Creek hosts Trivia on Wednesday nights, BINGO Thursdays and Open Mic on Friday. •

Montana's community of musicians has been without live opportunities to perform for close to a year. When **Sam Platts** and his band, **the Plainsmen**, found themselves looking for a way to continue sharing music they wanted to do something that would be sustainable and bring together other musicians. In a stroke of luck, they connected with Pat Lokken, a videographer and technology guru from Bozeman, and together, they have created a weekly livestream. After the first shows, Tessa Lou Williams, who moved back home to ride out the COVID-19 pandemic, joined as a weekly featured guest.

Hosted at a restored barn near

Norris, the show is designed in the vein of the old country variety shows, like the Porter Wagoner Show and The Johnny Cash Show. While casual livestreams from musicians' homes have been a great way to connect with fans during the COVID-19 pandemic, Platts wanted to design something that could stand on its own as a recorded video, and with the help of Lokken, the show is filmed and streamed live on a stage with multiple cameras and high-quality sound. Doing the show live is important, as the band wants to bring the closest thing to a live performance possible into people's homes. Each taping is live, and streamed as-is

### Montana musicians release album recorded in Forest Service cabin

The music of the **Road Agents** has always had a rustic feel, and the Montana band embraced that aesthetic while crafting their fourth release. **Exile on Moose Creek** was recorded entirely in the Forest Service cabin at Moose Creek west of Helena over three days in Sept. 2020, and mixed and mastered later that month at Vigilante Cabin on the Ruby River. The band released the final product earlier this month on iTunes, Spotify and Bandcamp.

"Most of our songs are set in the lonelier parts of the state, in the places we grew up," said songwriter, singer and guitarist Jeff Peterson. "Doing an album in a Forest Service cabin fits right in with what we want this band to be."

After more than 40 gigs across the state in 2019, the Road Agents, like musicians around the country, were forced to cancel everything and stay off the road in the face of the COVID-19 pandemic.

without editing.

Having their own avenue to share music has been great for the band; however, connecting with other musicians has been the biggest highlight. Past guests have included acts like **Mercedes Carroll, Laney Lou and the Bird Dogs, Brigid and Johnny Reedy, Kostas, Dave Walker** and **Montana Rose**. Like Sam Platts and the Plainsmen, other musicians are looking for new outlets to share their music.

To this point, the show has been a labor of love for Platts and the band, using tips to pay for the video production. With a solid catalog of livestreams under their belt and increasing viewership, the group plans to begin offering sponsorship opportunities with the goal of being able to pay guests a competitive wage, comparable to when they could play live. Platts also plans to continue the show into the future, post social distancing. Montana is lucky to have many acts travel through, and from more guest appearances to adding limited audiences, he sees a lot of potential in the show far beyond our current situation.

To see past shows, find and follow Lokken Productions on YouTube. To learn more about the founding band, visit [www.facebook.com/samplattsmusic](http://www.facebook.com/samplattsmusic) or [www.samplatts.com](http://www.samplatts.com). •

"We were a little down this summer," said mandolinist Justin Ringsak. "We had just finished our second record, and we were looking forward to playing around and sharing it, but then the pandemic hit and put the brakes on live music."

The band played a few shows in outdoor venues over the summer before winding down in the fall. Peterson had crafted a new batch of songs they decided to record at Moose Creek. Usually a straightforward guitar, mandolin and vocal duo, part-time member and Michigan blueberry farmer Joe Corrado, after a negative COVID-19 test, was imported to fill out the sound. Three snowy days at Moose Creek led to eight finished tracks. Having another musician on board encouraged the group to add more variety to their sound, incorporating shaker, cajón, handclaps, and layered singing along with Corrado's guitar embellishments.

"We try to get an authentic roots-folk sound when we record," Ringsak said. "We track most parts live all at once in only a couple of takes, so what you hear on our records is what you would hear if we were playing live at the brewery or in your kitchen. This album was a bit different. We recorded the main parts with all three of us together around the wood stove, then the next day we'd move the mics around and one or two of us would sing harmonies or slip in some percussion while the other guy was in the kitchen making coffee and cooking bacon."

The album's title, *Exile on Moose Creek*, is a nod to the Rolling Stones' classic, *Exile on Main Street*.

"We're definitely not the Stones," said Peterson. "But, with all that happened last year, we did kind of feel like exiles. We're lucky that Montana is full of hidden treasures like the Moose Creek cabin. If you're going to be exiled, might as well be hiding out in the mountains, making music with your friends."

Learn more about the band and access the new album, as well as their back catalog, at [www.montanaroadagents.com](http://www.montanaroadagents.com). •

# KGLT

ALTERNATIVE PUBLIC RADIO

**MSU 97.1 / BOZEMAN 91.9**  
**BIG SKY 91.9 / HELENA 89.1**  
**BIG TIMBER 90.5**  
**GARDINER/MAMMOTH 107.1**  
**STREAM @ KGLT.NET**  
**REQUESTS 406-994-4492**

## BOZEMAN SYMPHONY

### RACHEL BARTON PINE PLAYS SAINT-GEORGES

---

**MARCH 6, 2021 // 7:30 PM**  
**FREE LIVESTREAM CONCERT**  
**BOZEMANSYMPHONY.ORG**

---

CONDUCTOR: NORMAN HUYNH  
GUEST ARTIST: RACHEL BARTON PINE

## Stream the best of Montana music. Anytime, anywhere, for free.

VISIT [WATCH.MONTANAPBS.ORG](http://WATCH.MONTANAPBS.ORG)  
OR DOWNLOAD THE MONTANAPBS APP

Download on the App Store GET IT ON Google Play

Facebook Twitter Instagram